



Electric Winch

Model: **CWG-30151**

PN: 151515 380V50Hz 151234 380V50Hz
154562 415V50Hz

Introduction

► Feature

- Lifting capacity: 500 kg wire rope top layer
- Lifting height: 58 m
- Lifting speed: 12-18 m/min at 50Hz
- Brake: Electromagnetic spring-applied failsafe brake
- Control: Pendant switch powers the winch

► Unpacking

- Winch assembly 1pc
- Wire rope 9 mm x 60 m w/weight hook CHW-0005 1pc
- Wire rope 8 mm x 100 m w/weight hook CHW-0005 for PN:151515 1pc
- Pendant switch CPB-213 w/cord 2.0 mm² x 5C x 3 m 1pc

► Read this manual carefully

You should carefully read and understand this manual carefully before operating it. Careless winch operation may result in personal injury hazards or property damage.

► Information requesting or parts ordering

Please specify the followings information:

- Winch PN
- Serial number
- Part description
- Replacement part number
- Quantity for each part

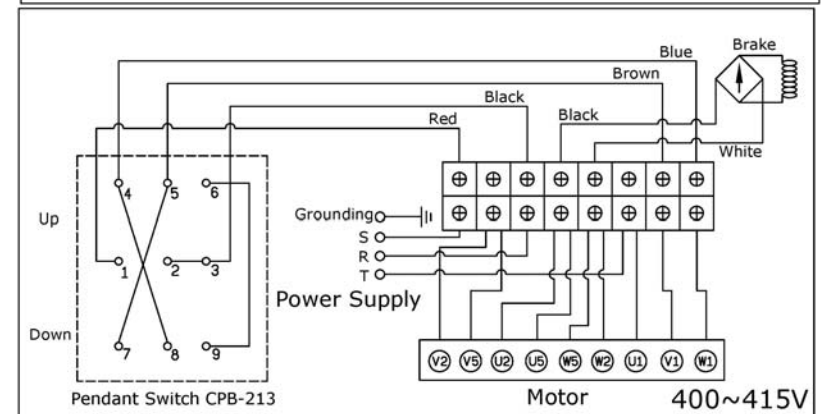
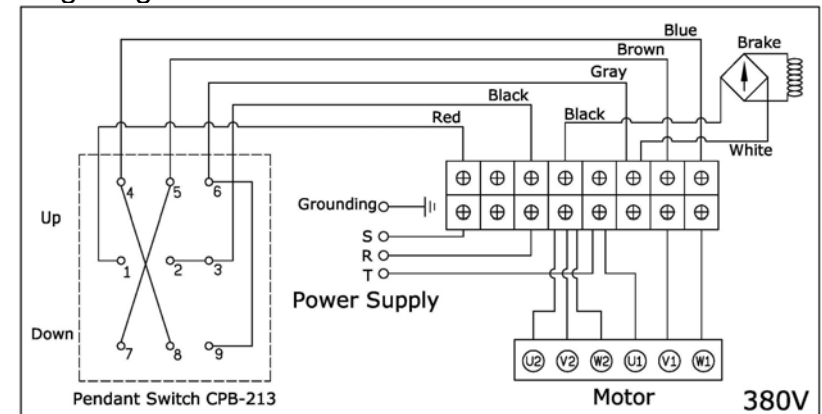
Installation

Before using the winch, make sure all electrical components have no corrosion or damaged; the environment should be clear and dry.

► Performance

Winch Model				CWG-30151							
Motor		kw x p		1.5 x 4							
Recommend Wire Rope		Size(mm)		9							
		Breaking (kg)		3,750							
1 st Layer	Rated Load (kg)	50Hz	742	2 nd Layer	Rated Load (kg)	50Hz	662	3 rd Layer	Rated Load (kg)	50Hz	597
	Speed (m/min)	50Hz	12		Speed (m/min)	50Hz	13.3		Speed (m/min)	50Hz	14.8
	Rope-Winding Cumulating Sum (m)		12		Rope-Winding Cumulating Sum (m)		26		Rope-Winding Cumulating Sum (m)		40
4 th Layer	Rated Load (kg)	50Hz	544	5 th Layer	Rated Load (kg)	50Hz	500				
	Speed (m/min)	50Hz	16.2		Speed (m/min)	50Hz	18				
	Rope-Winding Cumulating Sum (m)		57		Rope-Winding Cumulating Sum (m)		60				

► Wiring Diagram



Warning

- The winch is not intended to be used in any manner for the movement or lifting of personnel.
- The lifting capacity shown is based on the top layer of rope on the drum.
- The rope winding on the drum shall remain 5 wraps from the drum.

Parts List

Item No.	Description	Part No.	Qty
1	Induction motor kit 380V	880827	1
	Induction motor kit 415V	880828	
2	Control kit ,CPB-213, PN:154562	880953	1
	Control kit ,CPB-213	880954	
3	Motor support rack kit	880806	1
4	Drum kit	880807	1
5	Connect shaft kit	880808	1
6	Gearbox support rack kit	880809	1
7	2 nd stage carrier kit	881663	1
8	1 st stage carrier kit	881664	1
9	Gear box kit	880814	1
10	1 st shaft kit	880815	1
11	Gearbox rear cover kit	880816	1
12	Brake base	880817	1
13	Brake disc	880818	1
14	Brake panel	880819	1
15	Brake kit DC200V	882220	1
15-1	Brake disc	882046	1
15-2	Brake coil DC200V	882221	1
17	Brake cover kit	880822	1
18	Wire rope w/weight hook	880823	1
	Wire rope w/weight hook for PN:151515	881456	
19	Base plate kit	880824	1

Winch Assembly

